



AN ADVANCED TRADING PLATFORM FOR PROFESSIONAL TRADERS

Professional traders require the latest trading technology to give them an edge. OmniPro is an advanced direct access trading platform designed to handle the high-capacity demands of professional traders, proprietary trading firms, and black-box trading systems. OmniPro provides professional traders with flexibility, speed, and risk management when accessing equity, options, and futures markets.

DESIGNED BY TRADERS

OmniPro's robust platform was developed by professional traders to exceed their needs. Our direct access technology provides multiple order entry configurations, monitoring controls, and can access every electronic US and Canadian equity, options, and futures exchange.

ADVANCED FEATURES

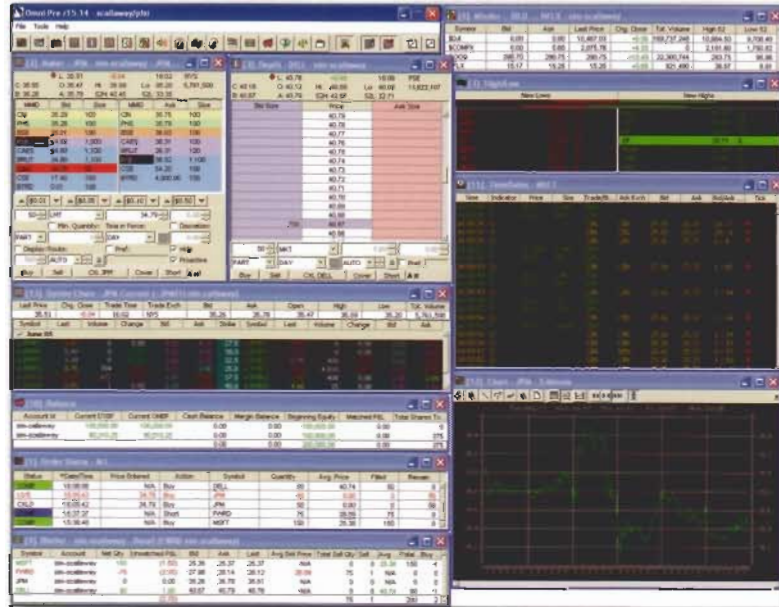
OmniPro provides low-latency real-time market data and charting, instant Level II access, as well as advanced order types, direct order routing, and analytics. OmniPro also allows for Automated Trading Systems (ATS) management and the ability to build models and trade from Microsoft Excel or other third party applications.

CUSTOMIZATION

OmniPro's features can be configured to suit the needs of each user. Traders can add studies to charts, review time and sales information, trade through hot keys, sort accounts and positions, and more. All layouts, views, and fields are customizable.

FEATURES:

- Fast and Direct Access to US and Canadian Markets and ECNs
- Support for Advanced Order Types: Trailing Stops, Peg Orders, Hidden, Reserve, and more
- Real-time Charting & over 30 Analytics
- Real-time Portfolio Balancing
- Customizable Interface
- Real-time Profit and Loss
- Multiple API's including Excel, HTTP, and FIX
- Live News from over 30 News Sources
- Real-time Alerts
- Complete Risk Management Tools



OMNI PRO

LEVEL II WINDOW

View both level I and II quotes, including OpenBook and TotalView. Place orders using the order entry panel.

OMNI PRO MAIN WINDOW

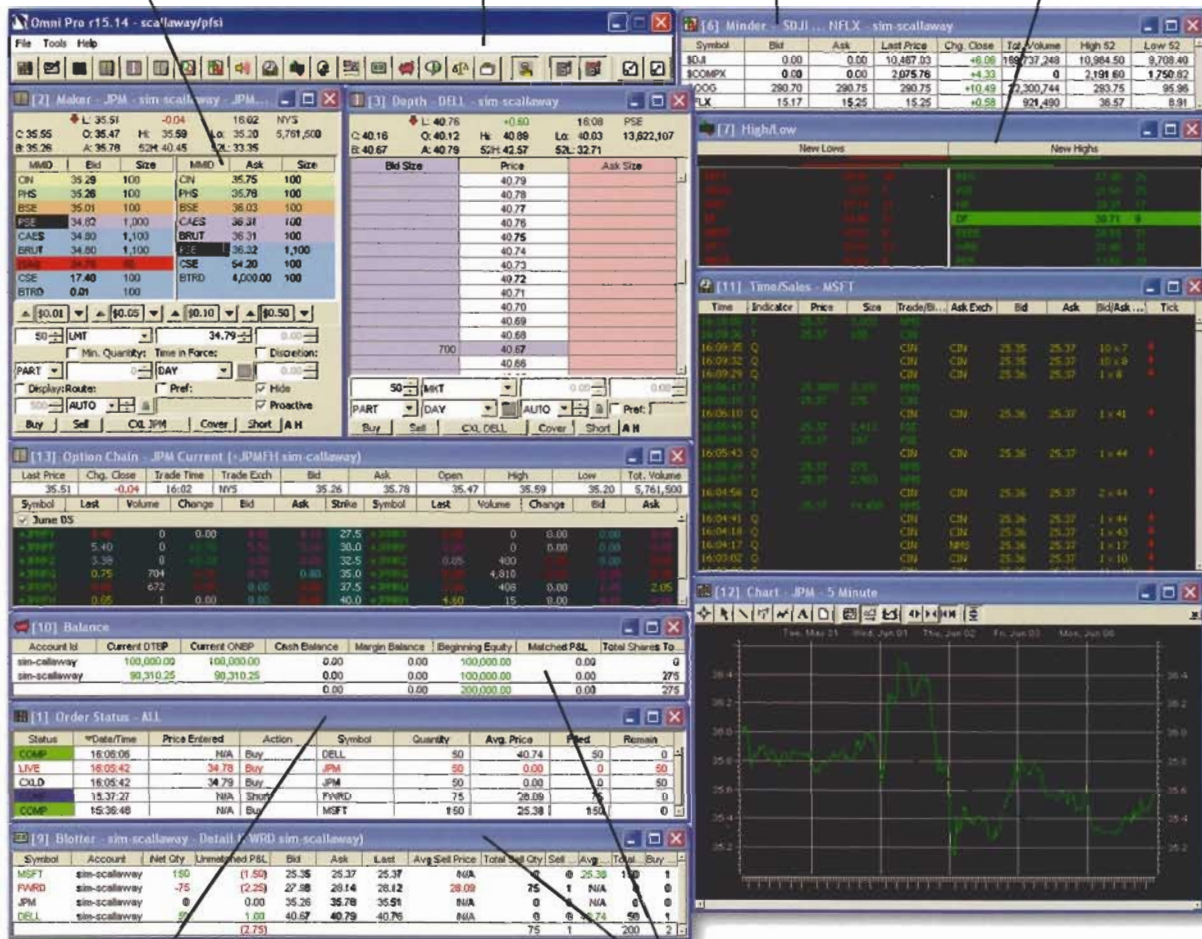
The toolbar buttons provide quick access to each of the windows in OmniPro, including system settings and online help.

MARKET MINDER WINDOW

Create a symbol watch list. View lists of most active and highest volume stocks for each exchange; over 40 values to choose from and all are updated in real-time.

HIGH-LOW WINDOW

Keeps tabs on stocks hitting new highs and lows for the day.



ORDER STATUS WINDOW

A complete picture of transactions, including open, completed, and rejected orders. Simply move mouse over the order status to view a detailed report for each transaction.

BALANCE AND BLOTTER WINDOWS

The Blotter and Balance windows provide a complete picture of positions and account balance. The blotter window can also be used to exercise options and view order details for each transaction.

